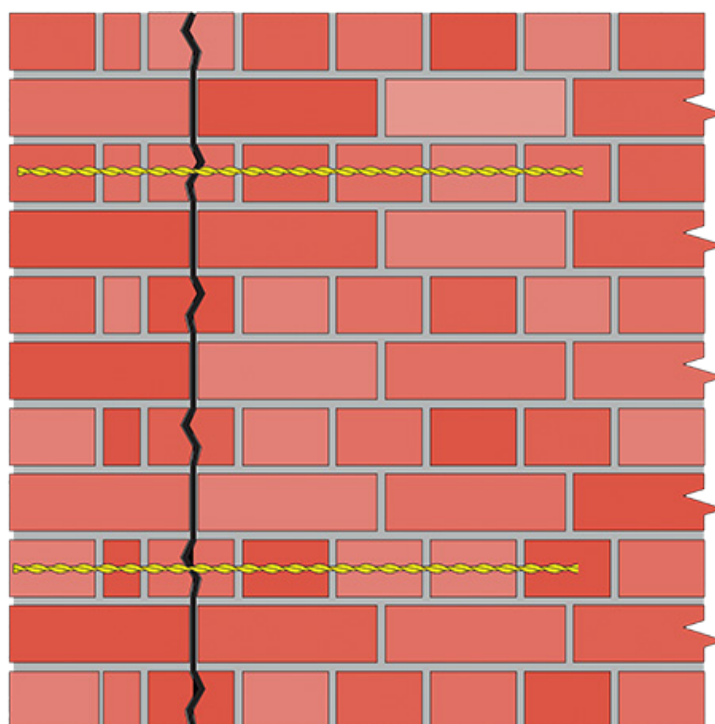


Side Elevation

 Cem Flex


Front Elevation

Method Statement

 Read the safety information overleaf

1. Locate and mark positions of holes on the outer side of the wall
2. Drill a clearance hole through the outer wall and to the required depth
3. Blow out the hole and thoroughly flush with water.
4. Fix the Cem Flex nozzle to the Bond Flex gun kit
5. Mix Bond Flex and load into Bond Flex gun kit
6. Pump Bond Flex to the outlet of the nozzle. Insert the nozzle to the full depth of the drilled hole and pump Bond Flex to fill the hole. Keep light pressure on the gun to ensure that all voids are filled with Bond Flex
7. Wind the correct length Cem Flex into the hole using the Cem Flex insertion tool
8. Make good at the surface of all holes and leave ready for any decoration

Guidelines

- A. Clearance hole to be 13-16 mm diameter depending on the material to be used
- B. Cem Flex to be installed at a vertical spacing of 450 mm
- C. Cem Flex to extend at least 100 mm past the crack
- D. Cem Flex to be installed within the centre third of the wall
- E. If cracking occurs on both elevations consider using Bar Flex crack stitching around the corner as in BF-06. If Cem Flex has to be used they should be staggered between each elevation.

Materials



Cem Flex 8mm



Bond Flex



Water

Tooling



Vacuum



Bond Flex Gun Kit



Cem Flex Nozzle &
Cem Flex Insertion Tool



Finger Trowel



Drill

Safety Equipment



Dust Mask



Eye Protection



Hand Protection



Ear Protection